

Vytex

POTOMAC *hp* SERIES®

An Elite Window Series
Exclusively From Vytex



A NAME YOU CAN TRUST

In 1988, after years in the industry, Andy Weinrub founded Vytex Windows and set out to make superior windows with the highest-quality materials and manufacturing standards.

More than three decades later, Vytex has grown to one of the largest privately owned window manufacturers in the country and is still going strong as a family-owned-and-operated business. Andy's son, Adam, now serves as president, and the entire family is involved in the day-to-day operations of the company.

At Vytex, we craft custom windows and doors inside our state-of-the-art, 200,000+ square-foot manufacturing facility in the Baltimore-Washington region. We use cutting-edge technology and the industry's finest equipment to manufacture products that are strong and durable enough to withstand the test of time and last for decades in your home. Unlike many manufacturers, at Vytex, we insulate all our glass in an on-site clean room, ensuring exceptionally clean glass that far exceeds industry standards.

Vytex is recognized as one of the top 100 window manufacturers in the country and has been awarded multiple Crystal Achievement Awards - a highly coveted award in the window and door industry. We're proud to be a member of the Fenestration & Glazing Industry Alliance and to maintain an A+ rating with the Better Business Bureau. Additionally, we partner with ENERGY STAR® to manufacture the most energy-efficient windows on the market.

When you choose Vytex for your home, you can be sure you are getting the absolute best products and s available.



The Weinrub Family: Adam, Magdalena, Andy & Olivia

CLEARLY, A CUT ABOVE®

The clean look and contemporary style of the Potomac-*hp* Series windows are complemented by innovative performance features and beautiful design options. One of the world's most efficient window systems, Potomac-*hp* Series windows are manufactured with the highest-grade materials and tested to meet or exceed industry standards. Virtually maintenance-free, Potomac-*hp* Series windows will maintain their quality and beauty for years to come.



DOUBLE-HUNG

The modern design and durability of our Potomac-*hpx* double-hung windows brings elegance and style to any space. Specially engineered to be low maintenance, our windows will never need to be painted. Tilt-sashes release inward making cleaning easy and convenient, and our unique thermal construction, and Potomac-*hpx* Series insulated glass, offer exceptional insulation capabilities keeping you cool in the summer and warm in the winter. With outstanding strength, low air infiltration and added security features, you can trust the Potomac-*hpx* double-hung window series to perform for years to come.



FEATURES & PERFORMANCE

DURABILITY & DEPENDABILITY

Specially formulated PVC and welded sash and frame offers long-lasting durability.

CLEAN WITH EASE

Both sashes are designed to tilt inward for accessibility and easy cleaning.

SUPERIOR CURB APPEAL

Elegant and sculpted exterior with optional grid detail for superior curbside appeal.

MAXIMUM INSULATING CAPABILITIES

Four high-performance Low-E glass options, triple weatherstripping, and our magnetic seal virtually eliminate drafts while our specially formulated VyFoam™, in frame and sash, offers ENERGY STAR® rated insulation.

ADDED STRENGTH & SECURITY

Our VyCore™ composite reinforcement provides added strength and security and is 533 times better than aluminum and 160 times better than steel. This technology will help prevent your window's sash from bowing over time.



MORTISED SILL DAM WALL

Mortised, double-walled sill dam extends into the jamb for added structural integrity.



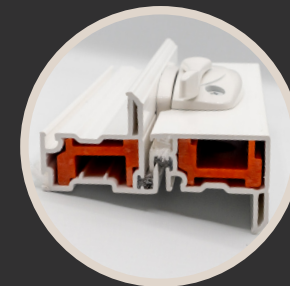
SILL/SASH INTERLOCK

Interlocking sill/sash provides added structural strength against heavy wind loads. Magnetic freezer weatherstripping and Q-Lon bulb-seal compression provide improved air infiltration.



DUALTECH LOW-PROFILE LOCK & KEEPER

Eliminates the need for tilt-sashes and offers a sleek appearance with clean sight lines while still providing unparalleled home security.



VYCORE™ REINFORCEMENT

VyCore™ composite reinforcement in the meeting rails adds strength and reduces thermal conductivity. Overall, performing 533x better than aluminum and 160x better than steel.

SLIDER

Vytex Potomac-*hp* Series slider windows are engineered to operate smoothly and with ease. Their elegant design and two-lite or three-lite options will complement the decor of any style home.



FEATURES & PERFORMANCE

DURABILITY & DEPENDABILITY

Specially formulated PVC prevents scratching or denting and welded sash and frame offer long-lasting durability.

MAXIMUM INSULATING CAPABILITIES

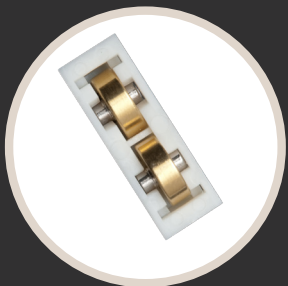
Three high-performance, Low-E glass options, triple weatherstripping, and our magnetic seal virtually eliminates drafts while our specially formulated VyFoam™, in frame and sash, offers ENERGY STAR® rated insulation.

SUPERIOR CURB APPEAL

Elegant and sculpted exterior with optional grid detail for superior curb appeal.



Available in two-lite and three-lite configurations



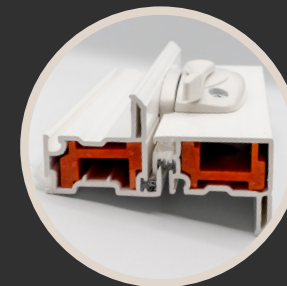
TANDEM BRASS ROLLERS

Brass rollers allow for effortless sash operation.



EXTERIOR MAINFRAME

Beautiful exterior mainframe adds curbside appeal to your home.



INTERLOCKING SASHES

Integral interlock keeps windows tightly closed for added security and weatherproofing.

CASEMENTS & AWNINGS

Potomac-*hp* Series casement and awning style windows make it easy to invite fresh air into your home. With a simple turn of the handle, casement windows open out at a 90-degree angle, while awning windows are hinged at the top and open out at the bottom.



FEATURES & PERFORMANCE

DURABILITY & DEPENDABILITY

Specially formulated PVC prevents scratching and denting and welded sash and frame offer long-lasting durability.

CLEAN WITH EASE

Casement windows effortlessly crank open at a 90° angle, allowing for easy cleaning.

SUPERIOR CURB APPEAL

Elegant and sculpted exterior with optional grid detail for superior curb appeal.

MAXIMUM INSULATING CAPABILITIES

Three high-performance, Low-E glass options, triple bulb-seal weatherstripping, and our magnetic seal, virtually eliminate drafts while our specially formulated VyFoam™ in frame and sash, offers ENERGY STAR® rated insulation.

EASY TO USE SCREENS

Pressure mounted screens eliminate unsightly clips and can be easily removed.



MULTI-POINT LOCKING SYSTEM

Low-profile, single lever, multi-point locking system for secure and easy operation.



OPERATING HARDWARE

Casement windows have special operating hardware allowing them to open to a 90° angle.



CASEMENT HANDLES

Streamlined and modern handles reduce interference with window coverings.

BAYS & BOWS

Potomac-*hp* Series bay and bow windows make an elegant addition to any room. Their unique shape adds interest and beauty while also making the room look and feel larger. Create a cozy new nook for reading or just enjoying a large, wide-open view of the outdoors.



FEATURES & PERFORMANCE

DUAL MULLION SYSTEM

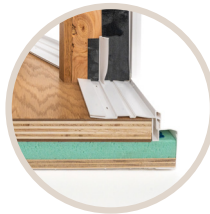
Featuring insulated solid mullions and steel threaded rod mullions for unmatched strength and performance. This design resists warping, sagging, and pulling apart over time. The insulated mullions are 58% lighter, offer higher R-Values, and resist moisture better than traditional mullions, all while maintaining structural integrity.

INSULATED SEAT BOARD

An insulated seat board is essential for lowering energy costs, preventing cold air transfer, and protecting against condensation and finish failures. All bay and bow windows come standard with a seamlessly integrated 1-1/2" insulated panel attached to the hardwood seat, creating a 2-3/4" sill with an R7 insulating value.

MAXIMUM INSULATING CAPABILITIES

Four high-performance glass options, triple weatherstripping, and our magnetic seal virtually eliminate drafts while our specially formulated VyFoam™, in frame and sash, offers ENERGY STAR® rated insulation.



PREMIUM HARDWOOD CONSTRUCTION

Head, seat and jambs feature furniture-grade 1-1/4" hardwood veneer plywood in Red Oak or Birch with painting and staining options available.



CUSTOM DESIGN OPTIONS

Three interior stain options, 18 exterior paint options, Solid surface seat boards, LED lighting systems, roof options and more.



PREMIUM EDGE BANDING

Premium edge banding covers the unfinished plywood edges, allowing for a clean, professional installation with a reveal for interior casing.

SIGNATURE SERIES PATIO DOORS

We offer elegant sliding patio door designs to complement your new windows and give your home a fresh, sophisticated style. Our sliding patio doors are engineered for exceptional durability and cost-saving energy efficiency.



FEATURES & PERFORMANCE

DURABILITY & DEPENDABILITY

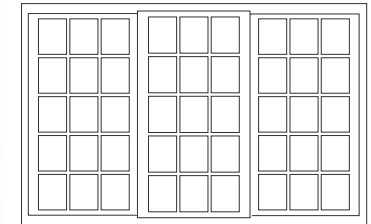
Specially formulated PVC prevents scratching or denting, full-height steel reinforced meeting rails provide extra strength and fusion welded sash and frame offer long-lasting durability.

MAXIMUM INSULATING CAPABILITIES

Three high-performance, Low-E glass options, Super Spacer® warm edge spacer system and our specially formulated VyFoam™, in frame and sash, offer ENERGY STAR® rated insulation. Multi-chambered insulating frames and weather-stripped interlocks help prevent drafts, leaks, and noise from entering your home.

ADDED SECURITY

Heavy-duty multi-point locking hardware keeps your home, and family, safer and more secure.



Available in two or three-panel designs to allow maximum natural light into your home.



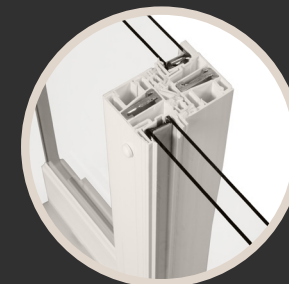
BETWEEN THE GLASS BLINDS

Instantly increase the privacy and beauty of your doors with the easy-to-operate VyView™ blinds. Keeps your blinds free from dust and allergens



CUSTOMIZED TO YOUR HOME

Available with designer handles and key locks with 7 finish options. Sixteen VyCoat™ exterior colors available. Optional security bar and kick lock.



MAXIMUM AIR BARRIER

Quad weather-sealed meeting rails offer eight fin-type weather strips for maximum air barrier.

FEATURES

At Vytex, we have over three decades of experience fine-tuning every inch of our windows. Manufactured from the highest-grade materials and tested to meet or exceed industry standards, the Potomac-*hp* Series is one of the world's most efficient window systems with the most advanced features and technologies available. Years of innovation and experience have led us to create windows that offer exceptional insulation and air infiltration capabilities. Our designs are easy-to-use and highly functional with technology that prevents cracking, broken seals and are virtually maintenance-free. With Vytex, you can count on your window's performance and beauty for years to come.



TECHNOLOGICALLY ADVANCED GLASS

High-performance, ENERGY STAR® certified windows incorporate double or triple insulating glass, one or more Low-E coatings, an advanced spacer system, and an inert gas between the panes of glass. Low-E is designed to help keep warm air inside during winter weather, and to reflect heat away from your home during summer months. This helps maintain a constant and comfortable temperature in your home and lowers your home energy costs.

SPACER COMPARISON

Spacers play an integral role in window performance and can significantly boost the energy efficiency of your windows. Our Super Spacer® system outperforms all the rest, dependably delivering high performance for insulating glass units, including excellent resistance to ozone, weathering, water, and aging while maintaining its flexibility through wide changes in temperature and barometric pressure.

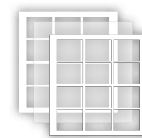


VYGUARD™ LAMINATED GLASS

SAFETY – The PVB (polyvinyl butyral) interlayer absorbs the energy of a sudden impact and resists penetration, minimizing the risk of injuries and improving home security. Although the glass may break, glass fragments remain firmly bonded to the interlayer, and the glass cannot be fully penetrated.

SOUND REDUCTION – VyGuard™ absorbs sound and reduces sound transmission by as much as 30% over a typical insulated glass unit.

ENVIRONMENTAL PROTECTION – In the event of a severe storm, VyGuard™ helps protect your home from interior damage.




GLASS FEATURES

The Potomac-*hp* Series offers four high-performance, energy-saving glass options so you can choose one that works best for your home and climate region. All of our ENERGY STAR® certified glass systems regulate your home's temperature to help keep you cool when it's hot and warm when it's not.




ENERGY SAVER MAX-*hp*™

Triple-paned with two panes of high-performance Low-E glass
Argon gas-filled insulated glass unit
VyFoam™ insulated frame and sash
Super Spacer® Warm Edge Spacer System

 VYTEX CORPORATION VINYL FRAME (6200-DH) TRIPLE GLAZE • ARGON • LOWE MAX VERTICAL SLIDER WINDOW VYW-A-44-00543-00001	
ENERGY PERFORMANCE RATING	
U-Factor (U.S./I-P)	Solar Heat Gain Coefficient
0.21	0.23
ADDITIONAL PERFORMANCE RATINGS	
Visible Transmittance	Air Leakage (U.S./I-P)
0.40	≤0.3
<small>Manufacturer indicates that these ratings conform to applicable NFRC procedures for determining whole product performance. NFRC ratings are determined for a fixed set of environmental conditions and specific product use. NFRC does not recommend any product and does not warrant the suitability of any product for any specific use. Consult Manufacturer's literature for other product performance information. www.nfrc.org</small>	

ENERGY SAVER R5™


Double-paned with one pane of high-performance Low-E glass and one pane of high-performance 4th surface Low-E glass
Argon gas-filled insulated glass unit
VyFoam™ insulated frame and sash
Super Spacer® Warm Edge Spacer System

 VYTEX CORPORATION VINYL FRAME (6200-DH) DUAL GLAZE • ARGON • R5 DUAL LOWE VERTICAL SLIDER WINDOW VYW-A-44-00532-00001	
ENERGY PERFORMANCE RATING	
U-Factor (U.S./I-P)	Solar Heat Gain Coefficient
0.23	0.27
ADDITIONAL PERFORMANCE RATINGS	
Visible Transmittance	Air Leakage (U.S./I-P)
0.50	≤0.3
<small>Manufacturer indicates that these ratings conform to applicable NFRC procedures for determining whole product performance. NFRC ratings are determined for a fixed set of environmental conditions and specific product use. NFRC does not recommend any product and does not warrant the suitability of any product for any specific use. Consult Manufacturer's literature for other product performance information. www.nfrc.org</small>	

ENERGY STAR® 7.0
North-Central Region


TripleSilverLoE-*hp*™

Double-paned with one pane of high-performance TripleSilverLoE™ glass
Argon gas-filled insulated glass unit
VyFoam™ insulated frame and sash
Super Spacer® Warm Edge Spacer System

 VYTEX CORPORATION VINYL FRAME (6200-DH) DUAL GLAZE • ARGON • LOWE TRIPLE SILVER VERTICAL SLIDER WINDOW VYW-A-44-00531-00001	
ENERGY PERFORMANCE RATING	
U-Factor (U.S./I-P)	Solar Heat Gain Coefficient
0.27	0.20
ADDITIONAL PERFORMANCE RATINGS	
Visible Transmittance	Air Leakage (U.S./I-P)
0.48	≤0.3
<small>Manufacturer indicates that these ratings conform to applicable NFRC procedures for determining whole product performance. NFRC ratings are determined for a fixed set of environmental conditions and specific product use. NFRC does not recommend any product and does not warrant the suitability of any product for any specific use. Consult Manufacturer's literature for other product performance information. www.nfrc.org</small>	

ENERGY SAVER R5 w/ TripleSilverLoE™

Double-paned with one pane of high-performance TripleSilverLoE glass and one pane of high-performance 4th surface Low-E glass
Argon gas-filled insulated glass unit
VyFoam™ insulated frame and sash, and window foam wrap
Super Spacer® Warm Edge Spacer System

 VYTEX CORPORATION VINYL FRAME (6200-DH) DUAL GLAZE • ARGON • R5 DUAL LOWE TRIPLE SILVER VERTICAL SLIDER WINDOW VYW-A-44-00533-00001	
ENERGY PERFORMANCE RATING	
U-Factor (U.S./I-P)	Solar Heat Gain Coefficient
0.23	0.20
ADDITIONAL PERFORMANCE RATINGS	
Visible Transmittance	Air Leakage (U.S./I-P)
0.47	≤0.3
<small>Manufacturer indicates that these ratings conform to applicable NFRC procedures for determining whole product performance. NFRC ratings are determined for a fixed set of environmental conditions and specific product use. NFRC does not recommend any product and does not warrant the suitability of any product for any specific use. Consult Manufacturer's literature for other product performance information. www.nfrc.org</small>	

ENERGY STAR® 7.0
South-Central & Southern Regions

ENERGY STAR® 7.0
Northern Region

SUPERIOR INSULATION & DURABILITY

Backed by years of innovation and experience, the Potomac-*hp* Series offers superior insulation capabilities with the promise of long-lasting durability. We've carefully designed every detail of the window to meet or exceed industry standards and to offer the highest quality performance possible. You can purchase our windows with peace of mind knowing they'll last.

1. BOTTOM SASH INTERLOCK

Our innovative bottom sash interlock ensures a tighter seal helping to reduce drafts and decrease your energy bills. Provides structural strength during heavy wind loads by locking the sash in place.



2. Q-LON COMPRESSION GASKET

Our Q-Lon, memory foam, compression bulb-seal gasket is the most energy-efficient weatherstripping currently used in the industry today. It adds barriers and diversions to help prevent water infiltration and drafts.



3. 5 DEGREE SLOPE SILL

Our carefully designed slope sill is the optimal angle for water runoff and to prevent air infiltration.

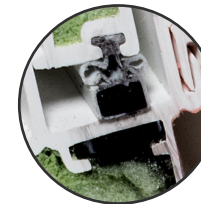


4. R5 VYFOAM™ IN FRAME & SASH

Our R5 foam-filled frame and sash insulation increase thermal efficiency, increase structural integrity, dampens sound, and reduces air infiltration.

5. MAGNETIC SEAL











Our freezer-magnetic insert compresses the sash to the frame creating a tighter seal, reducing the possibility of leaking and drafts.



6. DOUBLE-WALLED SILL DAM

Tight-mortised cut, double-walled, sill-dam extends inside the jamb, eliminating the need to caulk an open seam.

AIR INFILTRATION COMPARISON

	INDUSTRY STANDARD	TRADITIONAL WOOD RESIDENTIAL DOUBLE HUNG WINDOWS	TRADITIONAL VINYL RESIDENTIAL HIGH-PERFORMANCE, DOUBLE HUNG	POTOMAC- <i>hp</i> SERIES
<p>1 CFM OF AIR LEAKAGE PER MINUTE</p>	<p>.30 CFM OF AIR LEAKAGE PER MINUTE</p>	<p>.23 CFM OF AIR LEAKAGE PER MINUTE</p>	<p>.15 CFM OF AIR LEAKAGE PER MINUTE</p>	<p>.03 CFM OF AIR LEAKAGE PER MINUTE</p>
<p> 7.5 GALLONS OF AIR PER MINUTE</p>	<p> 2.25 GALLONS OF AIR PER MINUTE</p>	<p> 1.725 GALLONS OF AIR PER MINUTE</p>	<p> 1.125 GALLONS OF AIR PER MINUTE</p>	<p> .22 GALLONS OF AIR PER MINUTE</p>
<p> 80 COFFEE CUPS OF AIR PER MINUTE (960 OZ/MIN)</p>	<p> 24 COFFEE CUPS OF AIR PER MINUTE (288 OZ/MIN)</p>	<p> 18.4 COFFEE CUPS OF AIR PER MINUTE (220.8 OZ/MIN)</p>	<p> 12 COFFEE CUPS OF AIR PER MINUTE (144 OZ/MIN)</p>	<p> 2.4 COFFEE CUPS OF AIR PER MINUTE (28.2 OZ/MIN)</p>

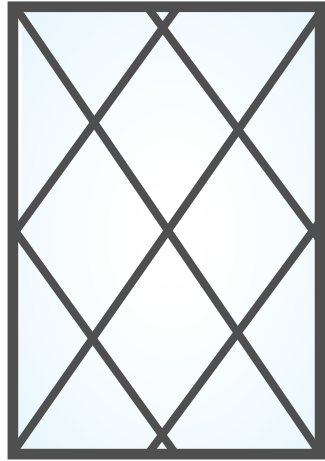
*References valid as of October 1, 2010 based on our competitors' websites and independent testing. **Industry Standard: The window & door industry adheres to standards set by FGIA® (Fenestration & Glazing Industry Alliance®). Per FGIA, the industry standard for Maximum Allowable Air Infiltration is 0.30 CFM (Cubic feet per minute) during a 25 mph wind. This is the equivalent of 2.25 gallons or 24 coffee cups of air escaping through the window every minute.

DESIGN OPTIONS

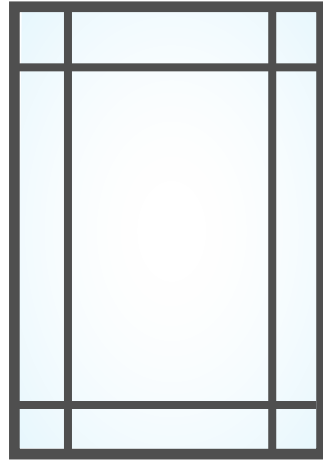
The Potomac-*hp* Series, like all Vytex windows, are customized to your home. The series offers multiple glass options, grid and contour details as well as color and finishing options that suit any style of home. Create long-lasting curb appeal and timeless beauty with these high-performance, modern windows.



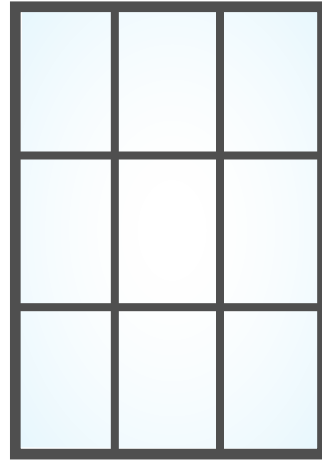
GRID DESIGNS



DIAMOND



PRAIRIE



COLONIAL

Additional patterns available upon request

TIMELESS BEAUTY



FLAT



CONTOUR



SIMULATED
DIVIDED
LITE



COLOR OPTIONS

CASHMERE

IVORY

WICKER

SANDALWOOD

CLAY

SANDSTONE

AMERICAN BROWN

UNIVERSAL BROWN

WEDGWOOD BLUE

OLD WORLD BLUE

FOREST GREEN

SABLE

BRONZE

TRUE BLACK

CRANBERRY

BURGUNDY

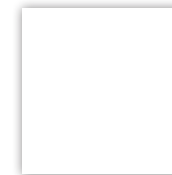
ELEGANCE THAT LASTS A LIFETIME

VYCOAT™ EXTERIOR COATING SYSTEM

The innovative technology of our VyCoat™ exterior coating system offers durability and elegance. This long-lasting, environmentally-friendly finish is low-maintenance, easy to clean, and will add enviable curb appeal to any home. Available in 16 standard colors and custom colors upon request.

INTERIOR COLOR OPTIONS

Special formula PVC never needs painting, makes cleaning a snap, and prevents scratching and denting.



WHITE



BEIGE

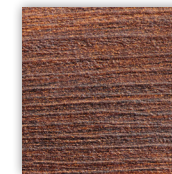


BLACK*

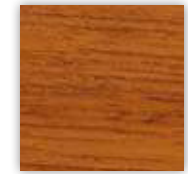
INTERIOR VYWOOD™ OPTIONS



MEDIUM OAK
WOOD GRAIN
LAMINATE



CHERRY
WOOD GRAIN
LAMINATE



BRAZILIAN
CHERRY
WOOD GRAIN
LAMINATE

*Colors are as true as printing inks allow and may differ from actual product colors. ** Only Medium Oak and Brazilian Cherry Wood VyWood™ options available for Signature Series Sliding Patio Doors

*** Black interior option does not have vent stops.

HARDWARE OPTIONS

The sleek and modern look of our Potomac-*hp* Series locking hardware is designed to be durable, ergonomic, and easy-to-use. Choose a finish that will compliment your interior style; from white to oil rubbed bronze, we guarantee a rich and timeless appearance.



FINISHES

WHITE

BEIGE

BROWN

OIL-RUBBED BRONZE

SATIN NICKEL

*Casements hardware is only available in white, oil rubbed bronze, beige, and brown.

**Color options and appearance of hardware is subject to change.



OUR PROMISE

At Vytex, we guarantee your windows for life.* Our promise to you is that in the course of normal use, our products will be free from defects in material and workmanship for as long as you reside in your home. Additionally, our **Potomac-hp Series** windows come with a lifetime glass breakage warranty. You can rest easy knowing Vytex windows and doors will maintain their function and beauty for years to come.

*Covers materials only. Labor and delivery are not included.

Vytex

CORPORATE OFFICE/MANUFACTURING
9425 Washington Boulevard N., Laurel, Maryland 20723
☎ 301.362.1000 • ☎ 877.747.8735

www.vytexwindows.com

