

Expect Superior Performance

In thermal tests, **Vytex®** Potomac-*hp* Series® **EnerCore™**
outperforms Aluminum and Steel

Potomac-hp **EnerCore™** Reinforcement performs

533 times

better than Aluminum

Competitor
window with
Aluminum



VS

Vytex Potomac-*hp* Series® **EnerCore™**



Potomac-hp **EnerCore™** Reinforcement performs

160 times

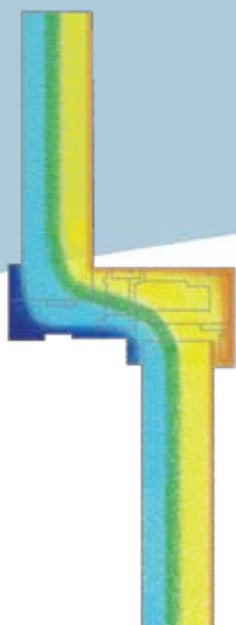
better than Steel

Competitor
window
with Steel



VS

Vytex Potomac-*hp* Series® **EnerCore™**



This thermal test
shows cold temperature
transfers are restricted
by our thermally
efficient composite
reinforcement.

To learn more visit www.vytexwindows.com or call

1-877-747-8735

Vytex