



## A NAME YOU CAN TRUST

For more than three decades, Vytex has crafted custom windows and doors inside our state-of-the-art, 200,000+ square-foot manufacturing facility.

We use cutting-edge technology and the industry's finest equipment to manufacture products that are strong and durable enough to withstand the test of time. And, unlike many manufacturers, we insulate all our own glass in an on-site clean room, ensuring exceptionally clean glass that far exceeds industry standards.

Vytex is recognized as one of the top 100 window manufacturers in the country and has been awarded multiple Crystal Achievement Awards – a highly coveted award in the window and door industry. We're proud to be a member of the Fenestration & Glazing Industry Alliance and to maintain an A+ rating with the Better Business Bureau. Additionally, we partner with ENERGY STAR® to manufacture the most energy-efficient windows on the market.

When you choose Vytex for your home, you can be sure you are getting an exceptional product backed by a family-owned-and-operated business and an industry-leading warranty.



**INDUSTRY  
LEADING PRODUCTS  
FROM A COMPANY  
YOU CAN TRUST.**

9425 Washington Boulevard N  
Laurel, Maryland 20723  
Toll Free: 877-747-8735 | Maryland: 301-326-1000  
[www.vytexwindows.com](http://www.vytexwindows.com)



# POTOMAC-hp

The clean look and contemporary style of the Potomac-hp Series windows are complemented by innovative performance features and beautiful design options. Potomac-hp windows feature a R5 VyFoam™ frame and sash with a performance grade of R65, which is 200 percent stronger than the industry minimum. They also feature an integrated sash lock and tilt system for seamless operation.

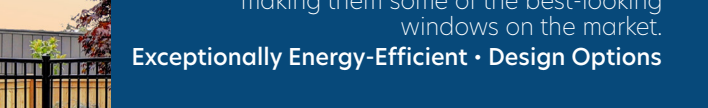
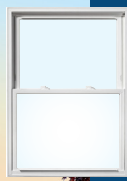
**Most Energy-Efficient • Most Customizable**



# FORTIS

Our Fortis Series combines quality, energy-efficiency, and beauty. This window boasts a R5 VyFoam™ filled frame & sash as well as tight, mortise-cut sill dam wall for structural integrity and reduced air and water infiltration. Fortis also offers one of the thinnest frame designs available today, making them some of the best-looking windows on the market.

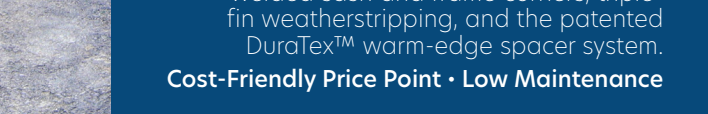
**Exceptionally Energy-Efficient • Design Options**



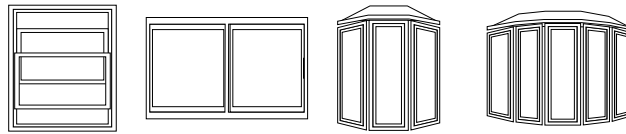
# GEORGETOWN

The Georgetown Series is a masterpiece of energy-efficiency with design for homeowners who are seeking attractive, low-maintenance windows at a cost-friendly price point. Our entry-level replacement windows are equipped with a number of key features including welded sash and frame corners, triple-fin weatherstripping, and the patented DuraTex™ warm-edge spacer system.

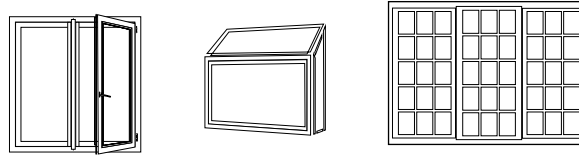
**Cost-Friendly Price Point • Low Maintenance**



## CONFIGURATIONS



Double-Hung    Two/Three Lite Slider    Bay    Bow



Casement/Awning    Garden    Patio Doors

## FEATURES & PERFORMANCE

**DURABILITY & DEPENDABILITY**  
Specially formulated PVC and welded sash and frame offer long-lasting durability.

**CLEAN WITH EASE**  
Both sashes are designed to tilt inward for accessibility and easy cleaning.

**SUPERIOR CURB APPEAL**  
Elegant and sculpted exterior with optional grid detail for superior curb side appeal.

**MAXIMUM INSULATING CAPABILITIES**  
Three high-performance Low-E glass options, triple weatherstripping, and our magnetic seal virtually eliminate drafts while our special VyCore™ foam in frame and sash, offers ENERGY STAR® rated insulation.

**ADDED STRENGTH & SECURITY**  
Our VyCore™ Composite Reinforcement provides strength and security and is 533x warmer than aluminum and 5x stronger than steel. This technology will help prevent your window's sash from bowing over time.



## AIR INFILTRATION COMPARISON

**TRADITIONAL VINYL WINDOWS**

**.15 CFM** OF AIR LEAKAGE PER MINUTE  
1.125 GALLONS OF AIR PER MINUTE

**OUR VINYL WINDOWS\***

**.03 CFM** OF AIR LEAKAGE PER MINUTE  
.22 GALLONS OF AIR PER MINUTE

\*Ratings are for Potomac Series

## ADVANCED GLASS OPTIONS

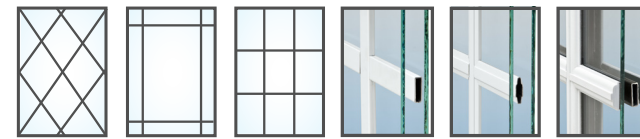
Our high-performance, ENERGY STAR® certified windows incorporate double or triple insulating glass, one or more Low-E coatings, an advanced spacer system, and an inert gas between the panes. Low-E is designed to help keep warm air inside during winter weather, and to reflect heat away from your home during summer months. This helps maintain a constant and comfortable temperature in your home and lowers your home energy costs.



- Sounds reduction by up to 30% over standard Insulated Glass Units
- Absorbs energy of a sudden impact and resists penetration

## DESIGN OPTIONS

### GRID DESIGNS



### INTERIOR COLOR OPTIONS

Special formula PVC never needs painting, makes cleaning a snap, and prevents scratching and denting.

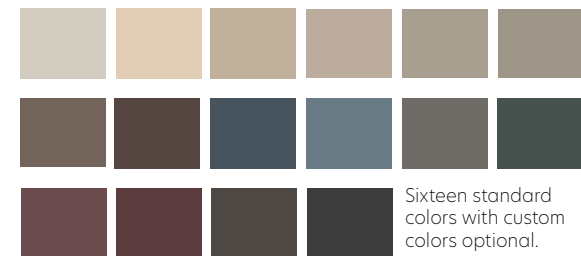


### INTERIOR VYWOOD™ OPTIONS



### VYCOAT™ EXTERIOR COATING SYSTEM

The innovative technology of our VyCoat™ exterior coating system offers long-lasting durability, an environmentally-friendly elegant finish, and is low-maintenance, and easy to clean.



Sixteen standard colors with custom colors optional.