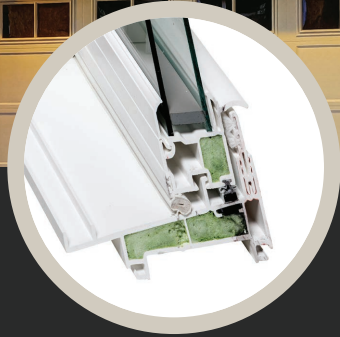


POTOMAC-*hp* SERIES[®]



WELDED CORNERS

Made from a specially formulated PVC, our welded sash and frame offers superior strength and durability, with a DP R-65 Rating – 203 mph wind load (200% stronger than industry minimum.)



SUPERIOR INSULATING CAPABILITIES

Our foam-filled sash and frame, triple-fin weatherstripping and magnetic seal (just like the one in your refrigerator), offer unparalleled insulating capabilities.



VYCORE™ REINFORCEMENTS

VyCore™ composite reinforcement in the meeting rails adds strength and reduces thermal conductivity. Overall, performing 533x better than aluminum and 160x better than steel.



INTRODUCING R5 GLASS: UNMATCHED CLARITY, ENERGY EFFICIENCY, & COMFORT

Our R5 glass is an energy-saving 4th surface coated glass. It offers excellent visible light transmittance and low reflectance. What's more, R5 is easy to clean. It's as scratch resistant as regular annealed glass, and there's no haze to mar the view. Rather than absorbing internal heat, our R5 glass reflects it back into the room, making your living space feel warmer and more comfortable.



SUPER SPACER® SYSTEM

Spacers play an integral role in window performance and can significantly boost the energy efficiency of your windows. Our Super Spacer® System outperforms all the rest, dependably delivering high performance for insulating glass units, including excellent resistance to ozone, weathering, water and aging, while maintaining its flexibility through wide changes in temperature and barometric pressure.

LOW PROFILE LOCKS & KEEPER

Our low profile locks and keeper offer a sleek, beautiful appearance with clean sight lines, while still providing unparalleled home security and child safety.



SUPERIOR AIR INFILTRATION

The Potomac-hp Series incorporates features like foam-filled welded frames and sashes, triple-fin weatherstripping, a magnetic seal and more. These important defenses are necessary to stop air from entering your home. Our windows reduce air infiltration 5x better than wood windows and 3x better than other high-performance vinyl windows. With a rating of .03 air infiltration – industry standards are .3 – our windows are among the most energy efficient on the market. Maintain comfort in your home and reduce your energy costs with the Potomac-hp Series.

WINDOWS DESIGNED TO LAST A LIFETIME

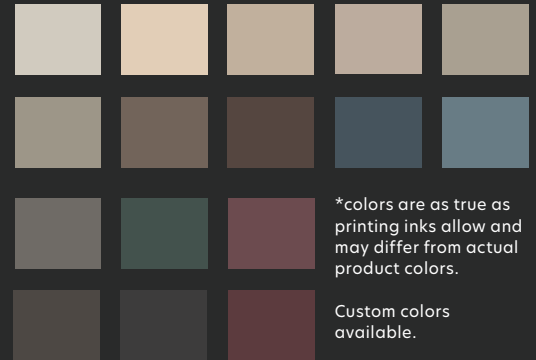
The Potomac-hp Series windows are one of the world's most efficient window systems and include the most advanced features and technologies available. Made from the highest-grade materials, our windows are tested to meet or exceed industry standards. They're virtually maintenance-free, and will keep their like-new beauty and performance year after year. At Vytex, we guarantee your windows for life.* Our promise to you is that in the course of normal use, our products will be free from defects in material and workmanship for as long as you reside in your home. Additionally, our Potomac-hp Series windows come with a lifetime glass breakage warranty. You can rest easy knowing Vytex windows and doors will maintain their function and beauty for years to come.

*Covers materials only. Labor and delivery are not included.

CUSTOMIZATION OPTIONS

VyCoat™ Exterior Coating System

The innovative technology of our VyCoat™ exterior coating system offers durability and elegance. This long-lasting, environmentally-friendly finish is low-maintenance and easy to clean.



Interior Color Options

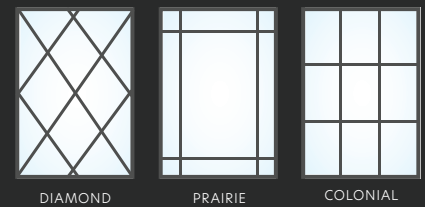
Special formula PVC never needs painting, makes cleaning a snap, and prevents scratching and denting.



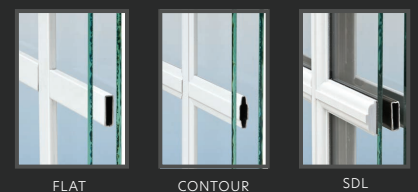
Interior VyWood™ Laminate Options



Grid Designs



*custom grids available



Hardware Options



*Casements are only available in white, oil rubbed bronze, beige, and brown. **Color options and appearance of hardware is subject to change.

9425 Washington Blvd. N, Laurel MD 20723 | 877-747-8735



Vytex

www.vytexwindows.com